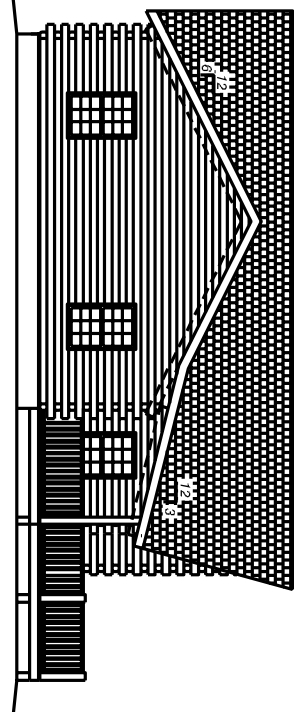
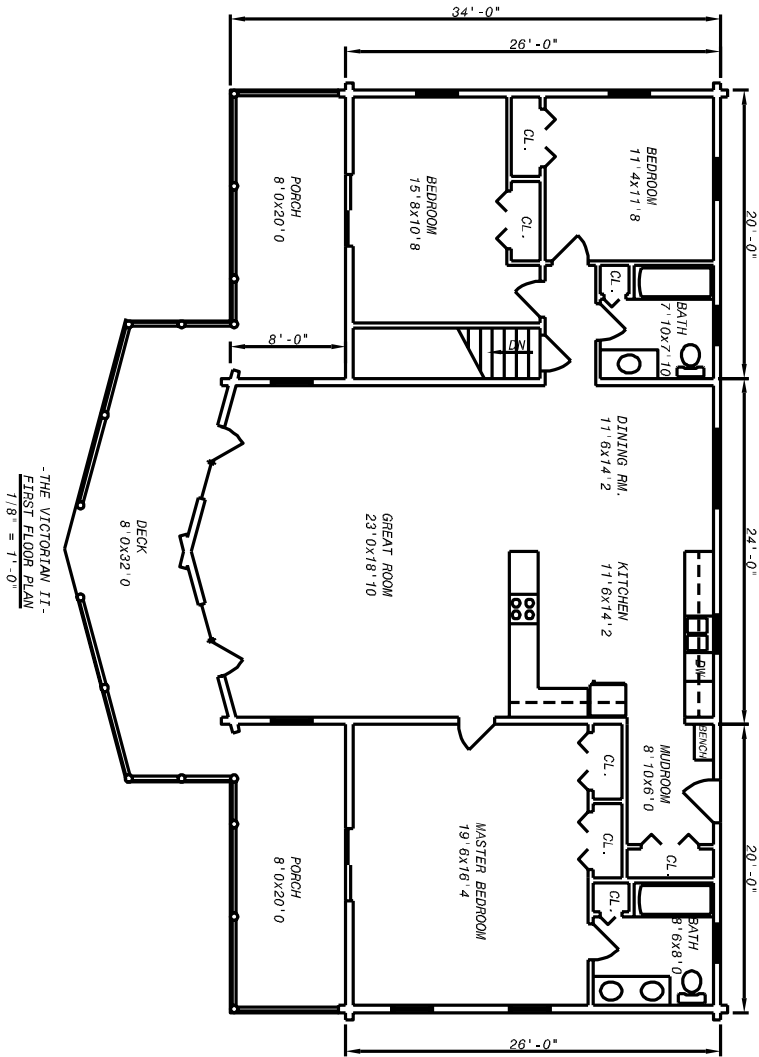


-THE VICTORIAN II-
FRONT ELEVATION
1/8" = 1'-0"



-THE VICTORIAN II-
SIDE ELEVATION
1/8" = 1'-0"



-THE VICTORIAN II-
FIRST FLOOR PLAN
1/8" = 1'-0"

Maine Cedar Specialty Products P O Box 39 Oakfield, ME 04763 Tel: 207-532-4034 Fax: 207-423-9915	
Project:	THE VICTORIAN II
Drawn by:	JEFF LAGAASSE
Date:	03/02/07
Project#:	0700
Scale:	AS NOTED
Notes:	SEE BUILDING ELEVATIONS
Sheet:	1 of 1